

Instructions: How to attach a mirror to the AZ Mirror Cell

Following these directions will ensure a firm grip on your mirror until you are ready to remove it.

1. See the AP web site for some helpful photos before you begin. Set up a clean work space that is large enough for the mirror, the cell and these instructions to be placed side by side. Plan to leave the mirror in this place overnight if possible.

2. Test fit the mirror: The three posts on the cell center the mirror with the o-rings on the posts acting as bumpers to compensate for variations in mirror diameter. Check the fit of the mirror between the posts, then adjust and/or remove the o-rings as needed to fit the diameter of the mirror. Remove the mirror from the cell and place on the work surface with the backside up.

3. Clean the surfaces prior to applying the silicone: Remove anything from the backside of the mirror, wipe the backside of the mirror with a clean cloth, use a small amount of alcohol as a solvent if you want. Check for any obvious dust or debris on the support discs and clean if needed. (Alcohol will not damage the support discs)

4. Prepare to apply silicone on the support discs: Open the tube of 732 Dow Corning Silicone that came with your cell. Put aside the plastic nozzle, you wont need it. Lay out a sheet of paper to practice on and have a small tool to use as a spatula when working with the silicone. I like to use old dental tools or a sharpened bamboo chopstick. Remove the cap from the tube and puncture the aluminum seal.

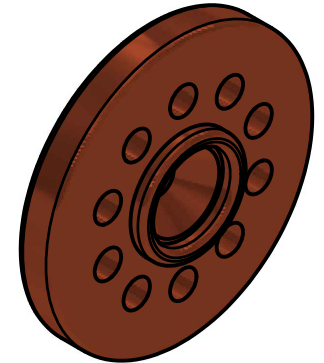
Consider using some disposable gloves if you don't want the silicone on your hands. The 3 oz tube of silicone has at least three times the amount of silicone you will need for this use, so you can afford to practice with some. Get used to how the silicone flows and how much pressure is needed to make a consistent circular bead.

You will note this is a fast drying silicone and it will start to form a skin rather quickly. It's important to place the mirror as soon as possible after the silicone is applied. Have everything in place before you apply the silicone so you can place the mirror quickly.

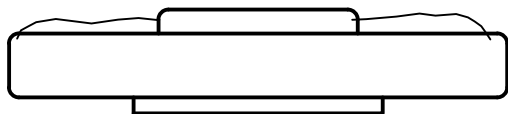
5. What the bead of silicone should look like: The size of the bead should fill the space on the disc over the vent holes and be higher than the center ridge of the disc. (see sketch below) A little more silicone is better in this case than a little less since the excess will squeeze out the holes and sides of the discs. It is not necessary or recommended to apply silicone to the center of the disc.

6. Start applying silicone to the discs: Continue until all discs are covered and place the mirror onto them as soon as possible. The mirror will settle and make contact with the support discs under its own weight, you can apply light pressure to make sure. Avoid moving or shifting the mirror after it has settled into place. You are now done with this procedure.

7. Do not move the cell for 12 hours while the silicone is curing. After 24 hours, the silicone will be 95% cured and the cell may be installed.



Support disc



Not enough



Looks good



www.aurorap.com

6644 SE Jerry Drive

Prineville Oregon 97754