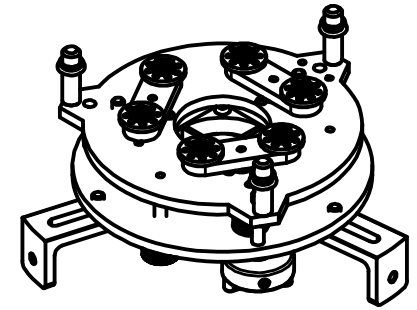
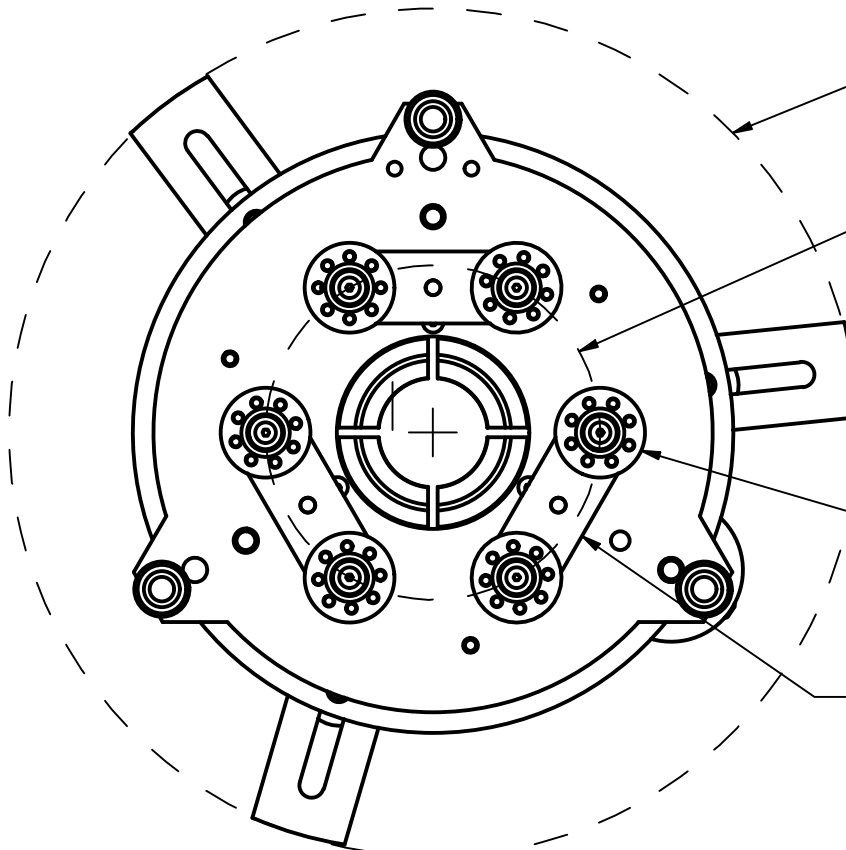


Model #AZ-6 6 point, tube mount mirror cell for a 6 inch mirror



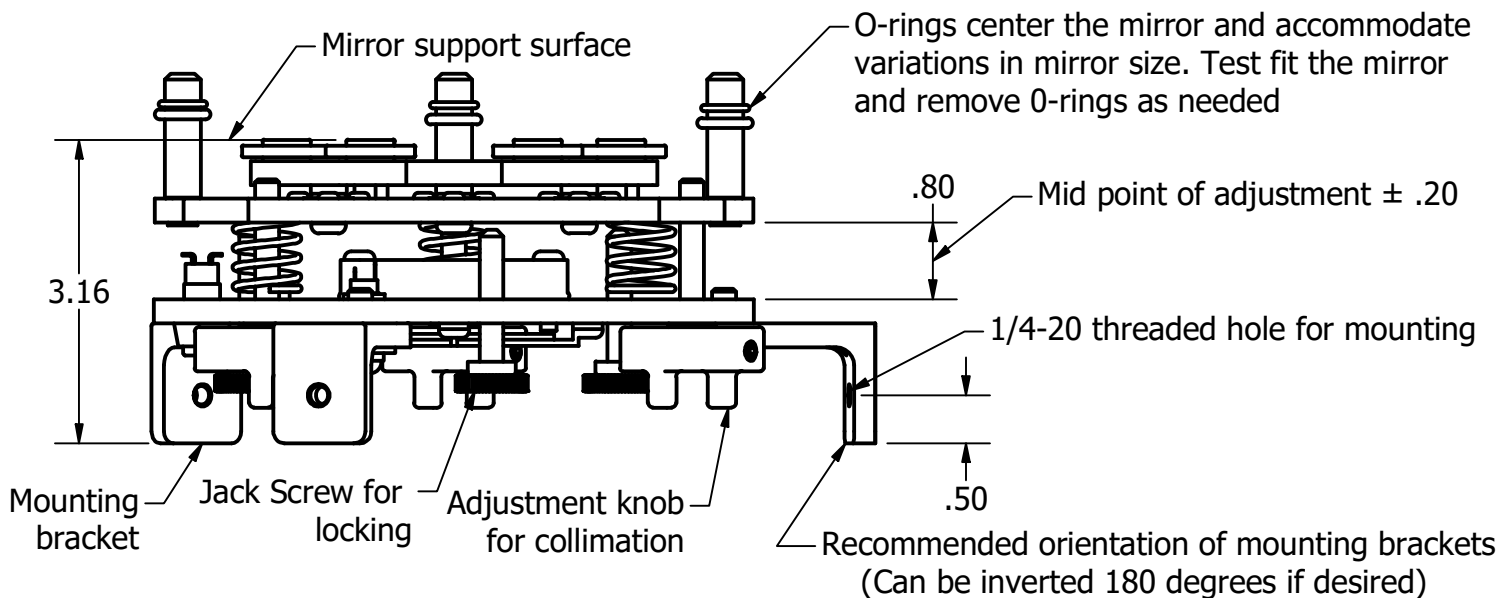
This cell uses silicone RTV to hold the mirror in place, and is suitable for all focal lengths, and thickness of .65 - 1.25 in.

Weight is 2 lbs 3 oz - .99 Kg
Shown with fan kit installed



- Mounting brackets adjust to fit your Tube
6.85Ø min - 8.83Ø max
- Position of support discs is determined with PLOP program
- Brackets are machined to fit an 8 inch tube I.D.
- Mirror support discs have vent holes to ensure rapid and complete cure of silicone
- This bar connects two discs and is supported by a spherical bearing, this allows the discs to align to the back side of the mirror and distribute the weight of the mirror between all six points

Images shown are from a full scale model



www.aurorap.com
6644 SE Jerry Drive
Prineville Oregon 97754
541-362-5965
AZ-6 Tube spec sheet Rev1 12-24-19
All Dimensions are in inches